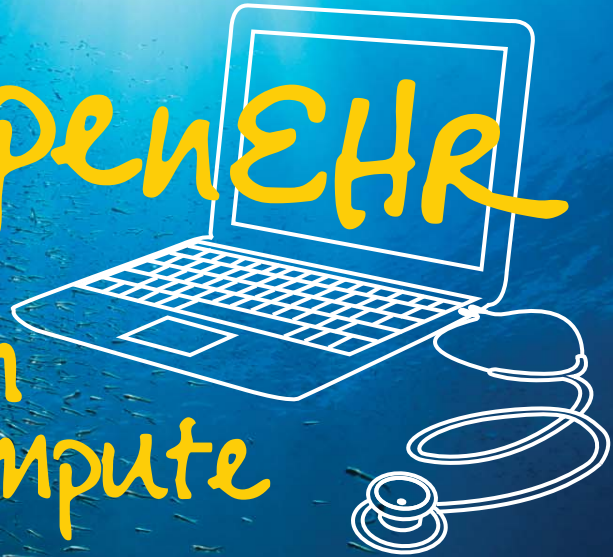


Thursday May 14
Friday May 15
2009

openEHR
Makes
Health
Compute



The *openEHR* platform is the basis for the ISO/CEN 13606 standards for electronic health records that are being adopted around the world – in fact it far exceeds the standards, and is spearheading international developments in semantic interoperability for management and exchange of critical health information between systems.

Ocean Informatics' knowledge tool suite is being used to create and manage archetypes and templates internationally as part of national EHR programs and vendor/organisation applications! The Ocean EHR platform provides a complementary and solid foundation for rapid archetype-enabled health information system development.

Find out for yourself what the buzz is all about...

- Standardised clinical content
- How to implement semantic interoperability
- Taking control of terminology and applying it in practice
- Integrating legacy data
- Standardising decision support and querying
- Who is using *openEHR* and how they are applying it...

Who should attend?

This course is suitable for anyone interested in obtaining an introduction to *openEHR* and standardising clinical content. We specifically encourage clinicians and others without a technical background to attend. It assumes no prior knowledge of *openEHR*.

PROGRAM DAY 1 – Thursday 14 May, 2009:

- > Why are EHRs so hard?
- > Why *openEHR*?
- > Clinical Knowledge Manager – clinical content model publication and governance
- > Demonstration of clinical modelling tools
- > Engaging clinicians
- > The *openEHR* footprint

PROGRAM DAY 2 – Friday 15 May, 2009:

- > Creating archetypes and templates
- > Benefits of Logical record architecture
- > *openEHR* + SNOMED CT = powerful combination
- > Harnessing SNOMED CT - terminology subsets in action
- > *openEHR* experiences – implementations in Australia and overseas

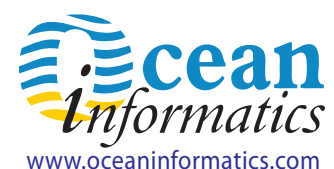
PRICE:

Single Day:	\$880
Both Days:	\$1585
Affiliate rate:	\$750 per day (15% discount) (offered to <i>openEHR</i> , MSIA, HL7, ACHI members)
Academic rate:	\$530 per day (40% discount)

Please enquire for volume discounts (3 or more)
All prices exclusive of GST.

VENUE:

Melbourne Business School
200 Leicester Street
Carlton, VIC 3053



REGISTER ONLINE www.coactive-events.com/registration.php